

sedus

Swivel chairs

se:do



**Sociable, reliable, attractive:
the newbie liked by everyone.**





People are different. People come in all shapes and sizes with diverse preferences. Modern forms of work such as smart working or non-territorial space concepts, where various individuals share one workstation, are driving demand for more flexible office furniture. The *se:do* swivel chair ticks all the boxes. Thanks to its ergonomic versatility, it can be adapted to new users quickly and easily and is ideal for multi-user workstations and open spaces. Add to that a high level of comfort and a distinct design makes *se:do* a highly regarded team member in every respect.

Individual focus for the best seat.

se:do's special features include ergonomic functions that are easy to adjust, ensuring that alternating users will always have a healthy and comfortable sitting posture. Even the standard version of *se:do* has an ergonomically formed seat pan and a height-adjustable backrest with a wide opening angle, which provides maximum back support in all positions. The Sedus "similar" mechanism allows the seat and backrest to always move in sync with the body. Numerous adjustment options round off the ergonomic properties, making every user feel relaxed and comfortable – regardless of their weight.



Self-explanatory. The patented Sedus quick adjustment setting allows you to easily adjust the pressure of the backrest and the opening angle. The controls are ergonomically arranged and come with clear function symbols.





Health-promoting. The height-adjustable backrest adjusts to different body sizes and, if desired, can have a depth-adjustable lumbar support.



Inclined. Being able to adjust the depth of the seat by up to 60 mm ensures that the thighs will be supported perfectly regardless of body size. The inclination angle of the chair can be adjusted by up to 4 degrees, which is beneficial, as a slight forward tilt can improve concentration.



Supportive. The height and inclination of the optional neck support can be adjusted, relieving the cervical spine. It can also be combined with a practical clothes hanger.



Adaptable. If requested, the *se:do* is available with height-adjustable armrests or 3D armrests that can be adjusted in height, depth and width without any tools.



Unlimited backing.

se:do owes its unique design and ergonomic feeling to the high backrest, which is available in two height-adjustable versions. One is fully upholstered, emphasising the overall comfortable look. The other one has a mesh backrest with the

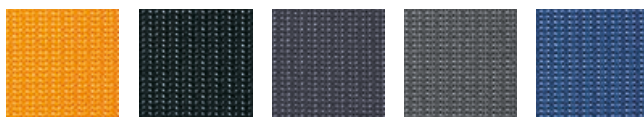
innovative Sedus climacontrol membrane, which regulates the seat climate, similar to sports and functional clothing. The seat shape has been incorporated into the membrane and provides a high level of comfort.



Haven of peace. The full upholstery follows the lines perfectly, giving it a pleasantly understated look. It can be easily adapted to any environment or corporate identity thanks to the wide range of Sedus fabrics.



Meshing. The translucent mesh backrest creates an informal atmosphere, especially in open spaces with lots of workstations, and its durable membrane can be designed in five modern colours.



Inner values
worth seeing.



Appealing forms that radiate comfort and reliability. *se:do* knows how impressive its unique profile is, whichever way you look at it. The large backrest with a linear design teams perfectly with the ergonomically formed seat. Harmonious proportions and well-defined creative touches, such as the curved seam tracking in the seat cushion, give *se:do* an understated look, which can be customised with different kinds of upholstery and colours.

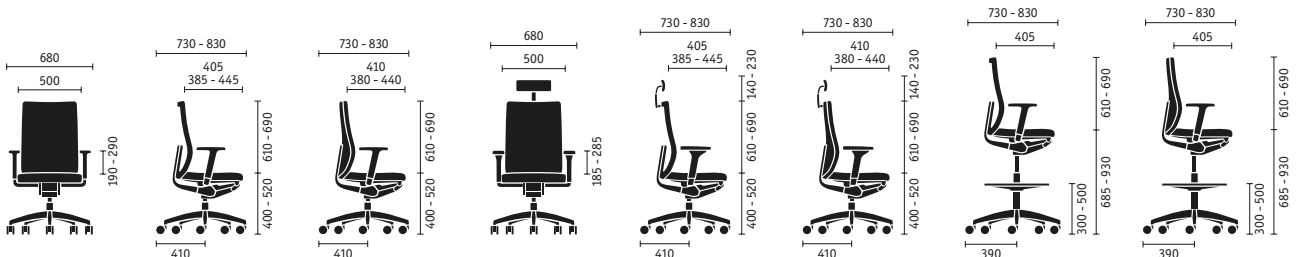


Light-footed. *se:do* looks light and modern thanks to the slim cross-shaped base. Choose feet that are made

from black plastic, polished aluminium or powder coated in white aluminium or black.

■ standard □ optional

	se:do with membrane backrest	se:do with upholstered backrest
Seat mechanisms		
"Similar" mechanism with spring tension quick adjustment	■	■
"Similar" mechanism with spring tension quick adjustment and seat tilt adjustment	□	□
Technology in the backrest		
Height-adjustable backrest	■	■
Depth-adjustable lumbar support	□	□
Adjustable backrest pressure	■	■
Seat height adjustment		
Gaslift with mechanical depth suspension	■	■
Gaslift	□	□
Gaslift for counter design with footring	□	□
Frame variants		
Plastic base black	■	■
Aluminium base in black, powder-coated	□	□
Aluminium base in white aluminium, powder-coated	□	□
Aluminium base, polished	□	□
Model colour (mechanism and plastic parts)		
Black	■	■
Armrests		
Without armrests	□	□
Height-adjustable armrests	■	■
4D adjustable armrests with soft touch pads	□	□
Specifications		
Height-adjustable neck support	□	□
Coat hanger (together with the neck support)	□	□
Standard seat	■	■
Sliding seat (with 60 mm depth adjustment)	□	□
Backrest with membrane cover	■	□
Seat and backrest upholstered	□	■
Different cover for backrest upholstery	□	□
Hard castors for soft floors	■	■
Soft castors for hard floors	□	□
Constantly braked castors for counter design	□	□
Fire protection version	□	□

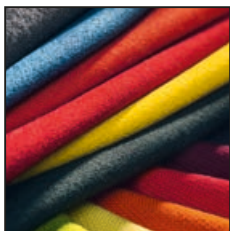


Sustainability down to the last detail.

Sustainability and quality “Made in Germany” have been key company principles at Sedus for more than 50 years. Principles that Sedus *se:do* also embody and which are reflected in recycling-orientated product design, ecologically tested materials, resource and energy-conscious manufacturing and ongoing quality tests.

Thus, for instance, solvent-free powder coating is used in the production of *se:do* instead of conventional paint. An ultramodern, particularly environmentally friendly electroplating facility, where all metal-containing production residues are fully recycled, is also part of the Sedus philosophy of quality and sustainability.

More information is available at www.sedus.com



Consistent. Fabric quality that is not only durable, but also exemplary in terms of tear and chemical resistance.



Gentle protection. Sedus does not apply paint for the finish or rust protection. Instead it uses a powder coating that is more environmentally friendly.



Saves space. If desired, *se:do* can be delivered partially assembled, which reduces transport costs and CO₂ emissions for larger quantities.



Sedus operates globally in accordance with the principles of the UN Global Compact on human rights, labour standards, environmental protection and fighting corruption.



Company:

Sedus se:do



MADE IN
GERMANY



sedus